



*Enhanced design innovations provide easier maintenance and energy efficient handling of larger loads*

**FEATURES/ADVANTAGES:**

Jeffrey Rader® brand NFE Electromechanical Vibrating Feeders are precision tuned near materials own natural frequencies, meaning burden and damping actually boost feeder performance.

These sub-resonant tuning characteristics ensure efficient material transference, promote quieter operation and reduce energy and maintenance costs. Additional advantages include the following:

**Rugged Deck Design**

Enhanced deck structure handles large lumpy materials with greater reliability.

**Exciter Assembly**

The exciter assembly transmits vibrating force to the deck pan, inducing conveying action in materials. Our new assembly consists of a pair of vibration motors mounted externally onto an excitation weight stack for easy accessibility.



**Rugged, Vibration Resistant Spring Retention**

Steel pre-compressed coupling drive springs ensure constant spring rates for greater operation stability. These steel springs feature a low damping coefficient, as well as consume less power compared with other types of drive springs. Springs can be easily and safely removed without touching exciter assembly.

**Vibrating Motors**

The vibrator motors 100% maintenance-free, with simple and reliable lubed-for-life sealed bearings.

**Frequency Controls**

Remote or local controllers with automatic or manual control circuits, enable plant PLCs to be used for batching and inventory control.

**Minimum Drive, Maximum Load**

Precision sub-resonant tuning drives large mass with minimal horsepower. Burden has a mass effect and a dampening effect on the feeder's mechanical vibration system, optimizing the performance of the unit.

**Minimum Stroke Variation**

Counteracting mass and damping effect have been designed into the feeder system, which assures maximum stability under varying load requirements due to minimal stroke variances between empty and loaded conditions. Adjusting the exciter frequency creates a smooth, effective variation of capacity (conveying speed).

**Feeder Capacities & Dimensions**

Innovative design features allow for increased capacities. Smaller, more efficient feeders can be specified with systematic application of throat opening to deck length. Under these circumstances, TerraSource Global engineers can advise changes in hopper design for optimum performance. Precisely matched hopper options are available

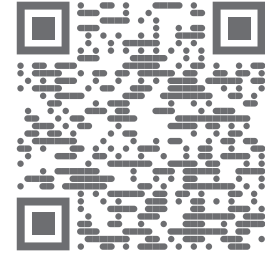
**APPLICATIONS**

Aggregates  
Limestone  
Coal  
Salt  
Wood Chips  
Industrial Materials  
Various blending substances for steel manufacturing

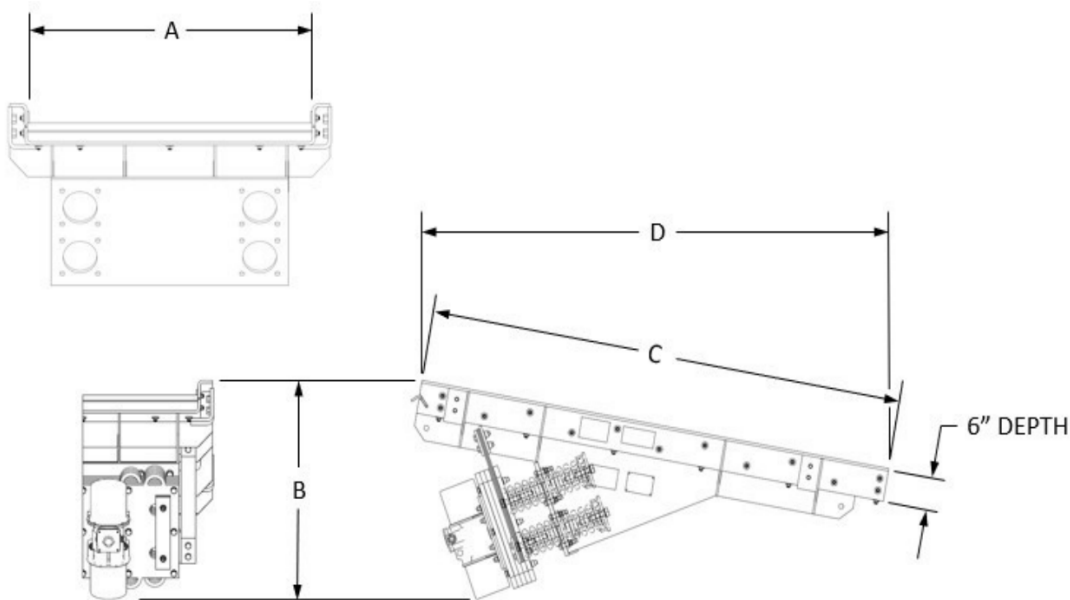
**ADVANTAGES**

- Reduced energy costs
- Easier maintenance
- Better safety
- CE compliant

**WATCH ON**  **YouTube**



**DIMENSIONS AND WEIGHTS**



MODEL NO.	CAPACITY (STPH)	HP**	A (DECK WTH)	B (OVERALL HT)	C (DECK LG)	D (OVERALL LG)	LBS (KG)
NFE36072	750	3.0	36" (914)	40.7" (1035)	75.0" (1905)	84.8" (2154)	3010 (1365)
NFE42072	800	3.0	42" (1087)	40.4" (1025)	75.0" (1905)	83.7" (2127)	3083 (1398)
NFE48084	1000	3.0	48" (1219)	41.8" (1063)	87.0" (2210)	90.0" (2286)	4056 (1840)
NFE48096	1075	3.0	48" (1219)	43.4" (1102)	99.0" (2515)	97.5" (2476)	4766 (2162)
NFE54084	1175	3.0	54" (1372)	42.0" (1066)	87.0" (2210)	90.4" (2295)	4707 (2135)
NFE54096	1200	3.0	54" (1372)	43.1" (1095)	99.0" (2515)	97.5" (2476)	5083 (2306)
NFE60084	1350	3.0	60" (1524)	42.0" (1066)	87.0" (2210)	90.4" (2295)	5133 (2328)
NFE60096	1375	3.0	60" (1524)	43.4" (1102)	99.0" (2515)	97.5" (2476)	5800 (2631)
NFE66096	1550	4.8	66" (1676)	45.1" (1146)	99.0" (2515)	97.5" (2476)	6548 (2970)
NFE66108	1775	4.8	66" (1676)	46.9" (1192)	111.0" (2819)	109.3" (2777)	8422 (3820)
NFE72096	1925	4.8	72" (1829)	45.7" (1160)	99.0" (2515)	97.5" (2476)	8305 (3767)
NFE72108	1950	4.8	72" (1829)	47.1" (1195)	111.0" (2819)	109.3" (2777)	9176 (4162)
NFE72120	2175	4.8	72" (1829)	48.8" (1241)	123.0" (3124)	121.1" (3077)	11078 (5025)
NFE84108	2500	4.8	84" (2134)	47.5" (1207)	111.0" (2819)	109.3" (2777)	11917 (5405)

**OUR FLAGSHIP BRANDS**

