



EnduraHogs™ are the next generation **JEFFREY RADER** workhorse hogs, known for decades as the most reliable and durable machines for precise sizing of materials. Available in various sizes and configurations, customers also benefit from re-engineered housings that feature ultra-large access doors and other service-focused design enhancements for the easiest, safest and fastest maintenance for customer operations.

UNIQUE ADVANTAGES OF ENDURAHOG MACHINES

Slant-Flow® Screen Grates

Slant-Flow® screen grates, unique to our EnduraHogs, are angled into the flow of material being crushed. This patented design enables higher capacity, provides more crushing action, and allows the material to evacuate faster. Customers gain additional efficiency and cost-effectiveness due to less clogging and diminished fines. Every part is built to original OEM specs enabling better performance and less chance of failures that can cause widespread damage to other parts.



New Brute Armor™ Screen Grates Now Available!

For operations demanding minimum maintenance and maximum durability, we're proud to introduce Brute Armor™ premium screen grate materials with wear-resistant steel, the strongest and most durable product you can buy.

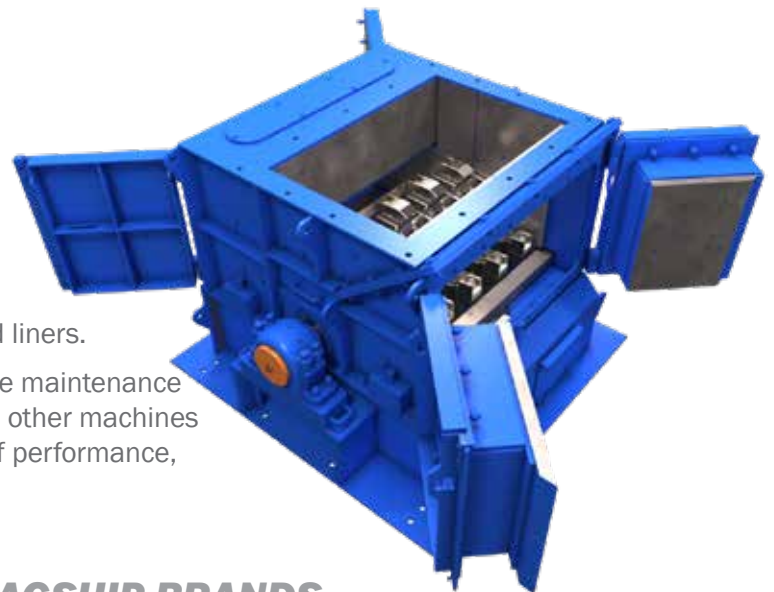
Heavy-Duty Rotor Design

Grinder hammers offer rugged performance while ensuring precision sizing. Usable life is enhanced by a symmetric design that enables users to flip the hammer when one side wears down. For particularly challenging applications, we offer a variety of custom alloys that can be blended into these hammers to provide optimal functionality and durability.

Easy Access Technology

EnduraHog machines expand Jeffrey Rader's reputation for easy access to internal wear components with new housing upgrades and ultra-large doors that offer the safest, fastest, and easiest options for getting to hammers, rotors, and liners.

Maintenance operators can quickly perform routine maintenance with minimal downtime and lower risk of injury. No other machines on the market offer customers the Grinder's mix of performance, ease of use and low cost of ownership.



OUR FLAGSHIP BRANDS



Hammer Design

Grinder Several hammer designs are available for both standard and SuperSluggger design rotors. The newest and most popular offerings are our Duralife® premium, wear-resistant hammers and tips. Replaceable Duratips® are designed to provide optimal crushing action, longer wear and quick changeout during maintenance periods. Solid, reversible hammers can be enhanced with Ultralloy® materials and additional hard coating for optimal crushing performance, all in many applicationspecific sizes and configurations. Each Duralife® hammer is built to complement our Brute Armor™ premium screen grates and break bars, all adding up to the most durable, high performance OEM crushing parts portfolio for any operation.



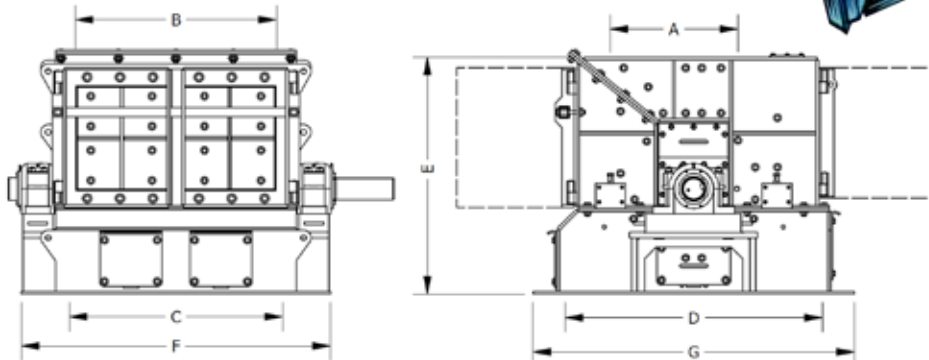
EnduraHog SuperSluggger — For the Most Challenging Applications

If your application requires significant size reduction of the biggest wood infeeds — whether its railroad ties, wooden spools, large diameter timber and so on — the SuperSluggger and its extra heavy hammers are the best choice for your operation.

The SuperSluggger rotor incorporates heavier and wider hammers to process larger, heavier infeed pieces. Typically, the hammers in this rotor are twice the weight of our standard Classic hammers. The rotor also incorporates a larger diameter shaft, thick rotor discs, and in some models, larger hammer pins. The swing hammer design, unlike solid rotors, helps minimize damage when uncrushable material, such as steel, enters the machine.



ENDURAHOG DIMENSIONS & WEIGHTS



MODEL	APPROXIMATE LAYOUT DIMENSIONS AND SHIPPING WEIGHTS							LBS (KG)
	A	B	C	D	E	F	G	
45WBEH	42" (1067)	25.5" (648)	44" (1118)	57" (1448)	54" (1372)	63" (1600)	64" (1626)	10,100 (4,581)
55WBEH	43" (1092)	33.5" (851)	46" (1168)	77" (1956)	63" (1600)	86" (2184)	72" (1829)	16,400 (7,739)
56WBEH	54" (1372)	33.5" (851)	56" (1422)	77" (1956)	63" (1600)	86" (2184)	83" (2108)	18,600 (8,437)
58WBEH	64" (1626)	33.5" (851)	67" (1702)	77" (1956)	69" (1753)	84" (2134)	98" (2489)	25,100 (11,385)
66WBEH	53" (1346)	33" (838)	57" (1448)	86" (2184)	78" (1981)	93" (2362)	89" (2261)	31,700 (14,379)
68WBEH	67" (1702)	33" (838)	71" (1803)	86" (2184)	78" (1981)	93" (2362)	113" (2870)	39,100 (17,735)

*Certified drawings furnished for installation.
Supervised installation available.

OUR FLAGSHIP BRANDS



www.terrasource.com

Call +1 855-483-7721 or email info@terrasource.com to find the sales representative nearest you.