

From the world leader in waste shredder design, manufacture and service.

Advantages

If your material is:

- municipal solid waste
- C&D wood waste
- mined landfill
- green waste
- wood waste

and, your size reduction requirement is for:

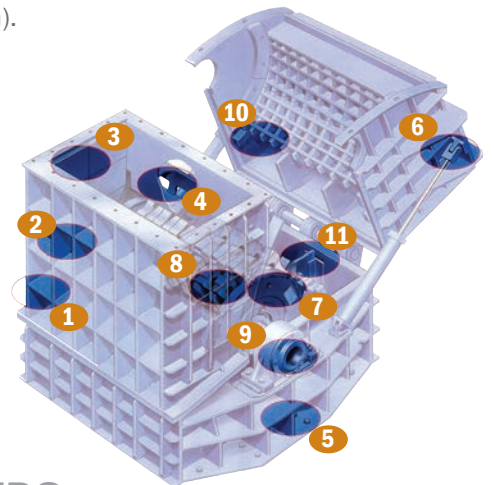
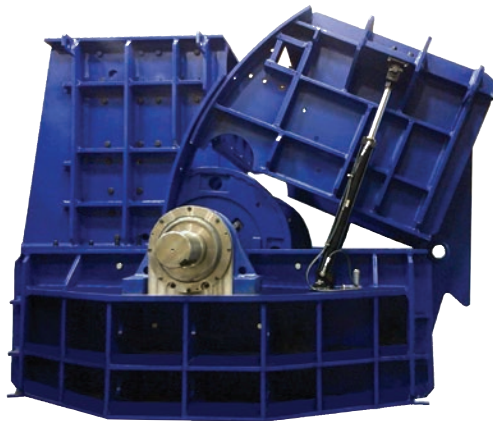
- waste to energy
- landfill
- resource recovery

... Jeffrey Rader brand waste shredders will produce consistent products at high capacities. Jeffrey Rader has a long history of providing follow-up service to assure continued attention and response to your application requirements.



- 1** Rigid, reinforced frame.
- 2** Breaker plate welded integrally to the upper front frame quadrant.
- 3** Frame protected internally with heavy-duty, removable, drilled and tapped, wear-resistant, heat-treated steel liners.
- 4** Breaker bar air gate.
- 5** Bearing supports welded integrally to lower side frames.
- 6** Hydraulically operated, upper rear quadrant opens for accessibility for maintenance. With this section of the frame open, the rotor can be removed without disturbing the feed hood.

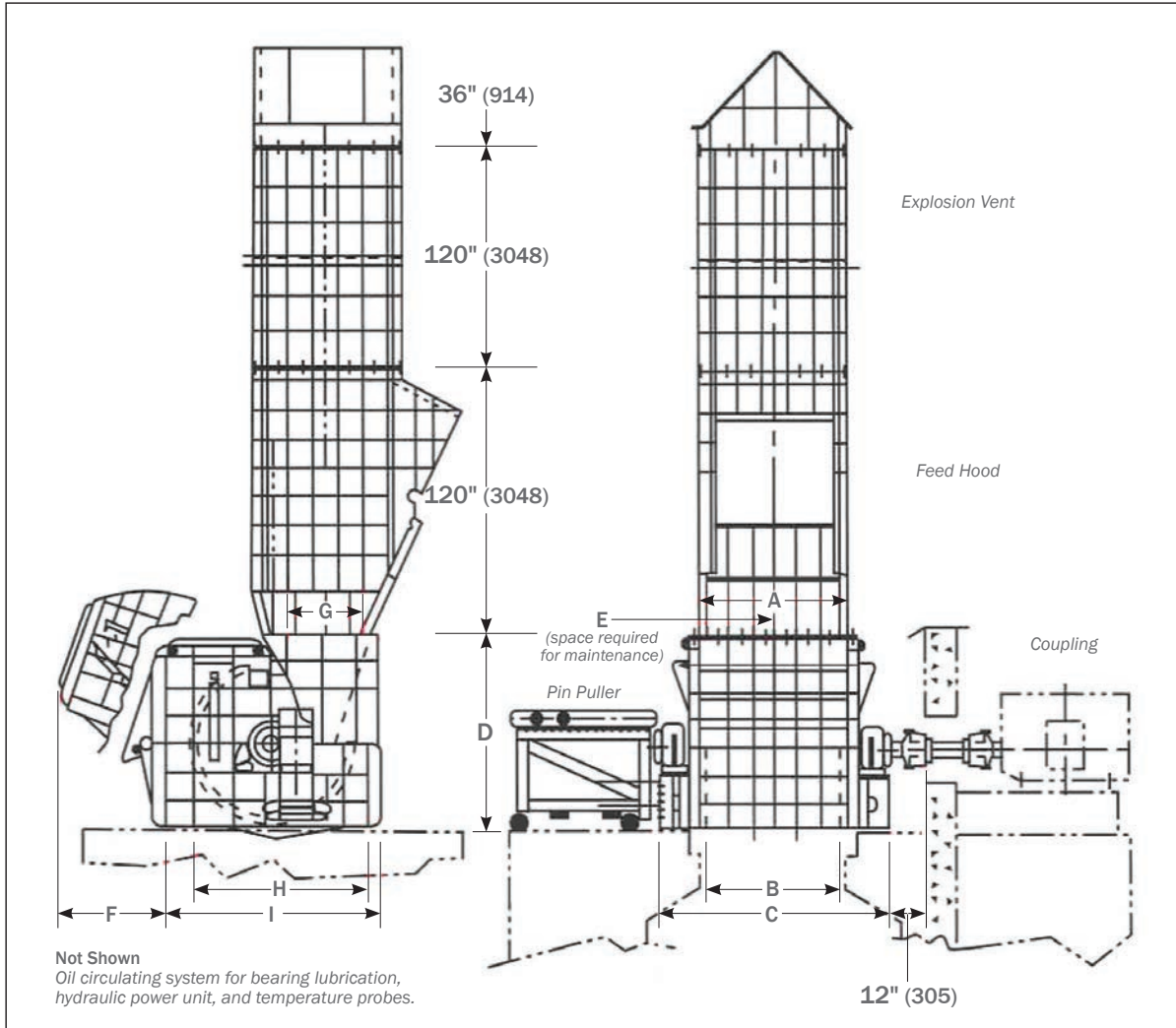
- 7** Horizontal-shaft, single-direction, spider-type rotor features tie rods; replaceable spider tips; replaceable end disc caps; double-row, self-aligning spherical roller bearings; and large hammer pins that are drilled and tapped for easy removal.
- 8** Solid, reversible swing hammers with four shredding edges for longer life.
- 9** Hydraulically assisted bearing removal.
- 10** Approximately 250° discharge area with hardened steel grates that are sized for your product size.
- 11** Contoured grate supports.
- 12** Oil circulating bearing lubrication system (not shown).



OUR FLAGSHIP BRANDS



DIMENSIONS AND WEIGHTS



IN. (MM)

APPROXIMATE LAYOUT DIMENSIONS* AND SHIPPING WEIGHTS

MODEL NO.	SHAFT DIA.	KW	A	B	C	D	E	F	G	H	I	LBS (KG)
680	7" (178)	1-1/2 x 3/4	81" (572)	88" (2235)	136" (3454)	76" (1930)	150" (3810)	45" (1143)	36" (914)	82" (2083)	94" (2388)	60,000 (27,216)
873	8.25" (210)	2 x 3/4	77-1/2" (1969)	82-1/2" (2096)	128" (3251)	104" (2642)	126" (3200)	52" (1320)	51" (1295)	102" (2591)	112-1/2" (2858)	78,500 (35,607)
893	8.25" (210)	2 x 3/4	92-1/2" (2350)	97-1/2" (2477)	144" (3658)	104" (2642)	141" (3581)	52" (1320)	51" (1295)	109-1/2" (2781)	113" (2870)	94,500 (42,764)
994	10.5" (267)	2-1/2 x 3/4	94" (2388)	100" (2540)	155-1/2" (3950)	128" (3251)	148" (3759)	59" (1499)	48" (1219)	133" (3378)	146" (3708)	155,000 (70,307)
9106	10.5" (267)	2-1/2 x 3/4	106" (2692)	110" (2794)	168" (4267)	128" (3251)	160" (4064)	59" (1499)	48" (1219)	133" (3378)	146" (3708)	170,000 (77,111)
1194	10.5" (267)	2-1/2 x 3/4	94" (2388)	100" (2540)	155-1/2" (3950)	149" (3785)	148" (3759)	61" (1549)	52" (1320)	141" (3581)	154" (3912)	178,000 (80,739)

*Dimensions are subject to change. Certified drawings will be furnished for installation. Installation supervision is available.

OUR FLAGSHIP BRANDS



www.terrasource.com

Call +1 855-483-7721 or email info@terrasource.com to find the sales representative nearest you.