

Jeffrey Rader[®] NFE Electromechanical Vibrating Feeders

*Enhanced design innovations
provide easier maintenance
and energy efficient handling
of larger loads*

FEATURES/ADVANTAGES:

Jeffrey Rader[®] brand NFE Electromechanical Vibrating Feeders are precision tuned near materials own natural frequencies, meaning burden and damping boost feeder performance.

These sub-resonant tuning characteristics ensure efficient material transference, promote quieter operation, and reduce energy and maintenance costs. Additional advantages include the following:

Rugged Deck Design

Enhanced deck structure handles large lumpy materials with greater reliability.

Exciter Assembly

The exciter assembly transmits vibrating forces to the deck pan, inducing conveying action in materials. Our new assembly consists of a pair of vibration motors mounted externally onto an excitation weight stack for easy accessibility.

Rugged, Vibration Resistant Spring Retention

Steel pre-compressed coupling drive springs ensure constant spring rates for greater operation stability. These steel springs feature a low damping coefficient, as well as consume less power compared with other types of drive springs. Springs can be easily and safely removed without touching exciter assembly.

Vibrating Motors

The vibrator motors 100% maintenance-free, with simple and reliable lubed-for-life sealed bearings.

Frequency Controls

Remote or local controllers with automatic or manual control circuits enable plant PLCs to be used for batching and inventory control.



Minimum Drive, Maximum Load

Precision sub-resonant tuning drives large mass with minimal horsepower. Burden has a mass effect and a dampening effect on the feeder's mechanical vibration system, optimizing the performance of the unit.

Minimum Stroke Variation

Counteracting mass and damping effect have been designed into the feeder system, which assures maximum stability under varying load requirements due to minimal stroke variances between empty and loaded conditions. Adjusting the exciter frequency creates a smooth, effective variation of capacity (conveying speed).

Feeder Capacities & Dimensions

Innovative design features allow for increased capacities. Smaller, more efficient feeders can be specified with systematic application of throat opening to deck length. Under these circumstances, TerraSource Global engineers can advise changes in hopper design for optimum performance. Precisely matched hopper options are available.



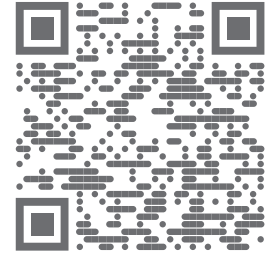
APPLICATIONS

- Aggregates
- Limestone
- Coal
- Salt
- Wood Chips
- Industrial Materials
- Various blending substances for steel manufacturing

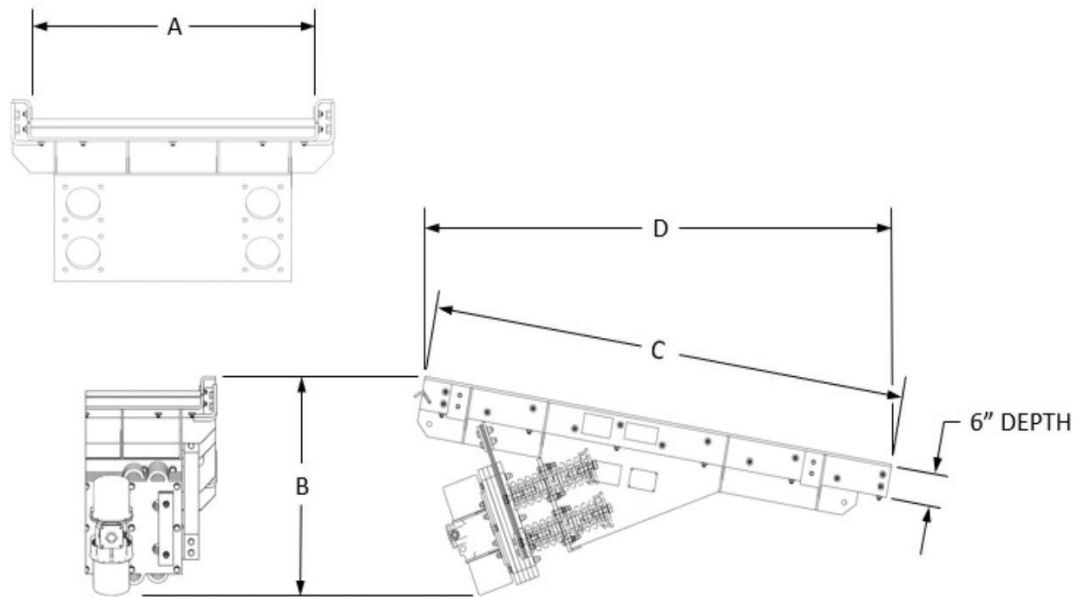
ADVANTAGES

- Reduced energy costs
- Easier maintenance
- Better safety
- CE compliant

WATCH ON  YouTube



DIMENSIONS AND WEIGHTS



NFE Electromechanical Vibrating Feeder Approximate Layout Dimensions* and Weights in Inches (mm)

MODEL	Capacity (STPH)	HP	A Deck Width	B Overall Height	C Deck Length	D Overall Length	LBS (KG)
NFE36072	750	3.0	36.0" (914)	40.7" (1034)	75.0" (1905)	84.8" (2154)	3,010 (1,365)
NFE42072	800	3.0	42.0" (1067)	40.4" (1026)	75.0" (1905)	83.7" (2126)	3,083 (1,398)
NFE48084	1000	3.0	48.0" (1219)	41.8" (1062)	87.0" (2210)	90.0" (2286)	4,056 (1,840)
NFE48096	1075	3.0	48.0" (1219)	43.4" (1102)	99.0" (2515)	97.5" (2477)	4,766 (2,162)
NFE54084	1175	3.0	54.0" (1372)	42.0" (1067)	87.0" (2210)	90.4" (2296)	4,707 (2,135)
NFE54096	1200	3.0	54.0" (1372)	43.1" (1095)	99.0" (2515)	97.5" (2477)	5,083 (2,306)
NFE60084	1350	3.0	60.0" (1524)	42.0" (1067)	87.0" (2210)	90.4" (2296)	5,133 (2,328)
NFE60096	1375	3.0	60.0" (1524)	43.4" (1102)	99.0" (2515)	97.5" (2477)	5,800 (2,631)
NFE66096	1550	4.8	66.0" (1676)	45.1" (1146)	99.0" (2515)	97.5" (2477)	6,548 (2,970)
NFE66108	1775	4.8	66.0" (1676)	46.9" (1192)	111.0" (2819)	109.3" (2776)	8,422 (3,820)
NFE72096	1925	4.8	72.0" (1829)	45.7" (1161)	99.0" (2515)	97.5" (2477)	8,305 (3,767)
NFE72108	1950	4.8	72.0" (1829)	47.1" (119)	111.0" (2819)	109.3" (2776)	9,176 (4,162)
NFE72120	2175	4.8	72.0" (1829)	48.8" (1240)	123.0" (3124)	121.1" (3076)	11,078 (5,025)
NFE84108	2500	4.8	84.0" (2134)	47.5" (1207)	111.0" (2819)	109.3" (2776)	11,917 (5,405)

* List is of standard deck size offerings. Any deck size can be constructed.

Call +1 855-483-7721 or email customer.service@astecindustries.com to find the sales representative nearest you.