



Pennsylvania Crusher[®] POSIFLOW[™] Feeder



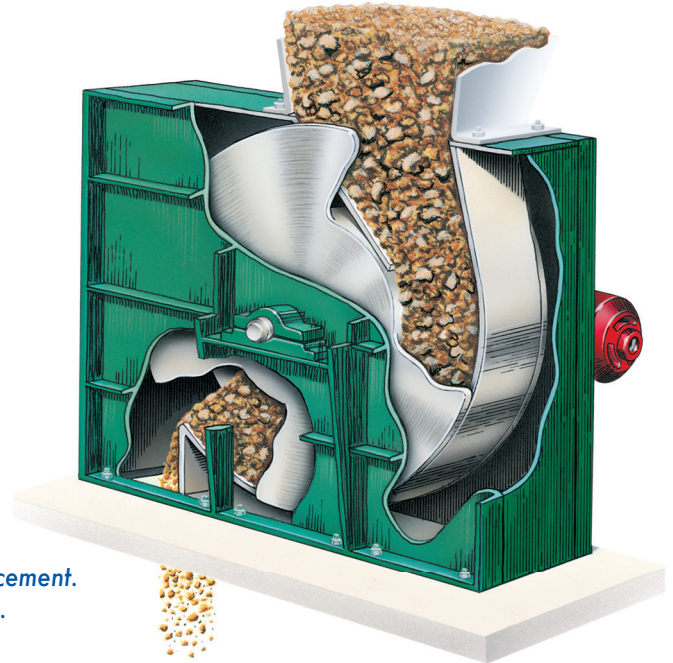
When Uniform Feeding, Dust Elimination,
and Trouble-Free Operation Matter!

Positive-Displacement Precision for Dust-Free, Reliable Feeding

The POSIFLOW™ Feeder is a breakthrough in bulk material handling—engineered to deliver exceptionally accurate, dust-free, and reliable feeding with a design so simple it redefines uptime.

Instead of fighting material bridging, POSIFLOW™ harnesses it. Controlled material lock-up fills the housing completely, then releases uniformly at the discharge point, producing exceptional feed consistency and accuracy across a wide range of bulk solids.

All this performance is achieved with a single moving part—resulting in minimal wear, reduced maintenance, and long-term reliability in demanding applications.



*Positive Displacement.
Proven Control.*

Notable Features

Positive Displacement Accuracy

- Enables **positive displacement feeding** with up to **99.5% accuracy**, unaffected by moisture. Feed rate is **predictable, repeatable**, and linearly **proportional** to rotational speed.

Uniform, Predictable Material Flow

- Controlled material lock-up and continuous release at discharge ensure smooth, stable flow—eliminating surging and starvation while responding instantly to load changes for consistent feed rates, reliable downstream processing, and precise combustion control.

Single Moving-Part Design

- Complete material lock-up creates a positive pressure seal that eliminates fugitive dust, resists downstream suction or pressure, and improves housekeeping, air quality, plant safety, and regulatory compliance.

Handles the Toughest Materials

- Slip-free lock-up transport handles wet, sticky, abrasive, and lumpy materials, wide density ranges, and mixed loads—without plugging, even in high-fines or clay-rich applications.

Exceptional Reliability

- Designed to stay clear and flowing. The self-cleaning feeder virtually eliminates blockages—maintaining continuous pulverizer feed, reducing forced outages, and safeguarding downstream equipment.

Ultra-Low Power Consumption

- Operating at rotational speeds as low as ½–15 RPM and throughput up to 1,800 TPH, power demand remains exceptionally low. The material does the work, delivering lower energy costs and near-wear-free operation.

Drop-In Replacement Simplicity

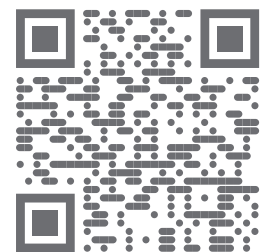
- The compact footprint and reduced inlet/outlet offsets support direct replacement of rotary, table, weigh feeders, and triple gates—eliminating extensive structural modifications and simplifying system integration.

Disc Liners Protect Against Greatest Wear

- Abrasion-resistant, replaceable liners safeguard critical surfaces, extending rotor disc life and minimizing long-term maintenance costs.

WATCH ON  YouTube

Watch how Pennsylvania Crusher's POSIFLOW® Feeders deliver uniform, positive material flow—eliminating fugitive dust, and improving safety in the most demanding environments like power and cement plants.



Engineered Volume Control—Every Rotation, Every Time.

The material lock-up/transport zone between the feed and discharge—approximately 180° of arc—has a fixed, known volume. Although open at both ends, this section functions as a defined container, limiting each rotation to a precise, repeatable quantity of material. Because partial fill cannot lock up and overflow is physically constrained, underfeeding and overfeeding are inherently prevented, independent of moisture content. Once locked, the material is gently carried by the duct walls with no relative sliding, resulting in virtually wear-free operation.

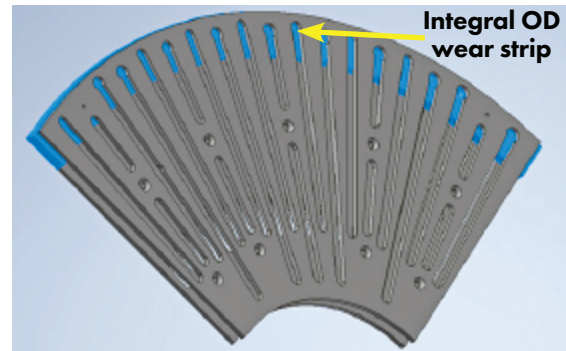


MODEL 1240 X-6
Top View

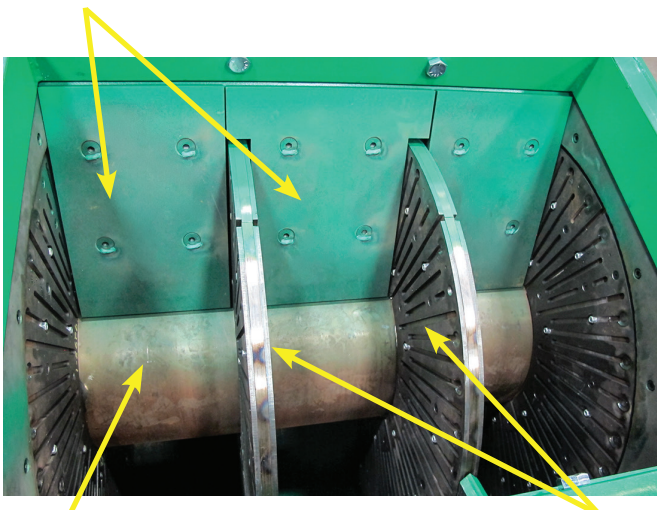
Type L Feeders:

Your Answer to Simplified Maintenance and Extended Equipment Life!

Our Type L Disc liners for POSIFLOW® Feeders used in limestone applications are designed to extend wear life and simplify rotor rebuilds. These liners tackle excessive wear on the rotor disc's outside diameter, especially in abrasive material operations. With enhanced durability, they provide superior protection, reduce downtime, and cut maintenance complexities. Precisely aligned and securely fastened, they ensure long-term performance, slashing wear-part costs.



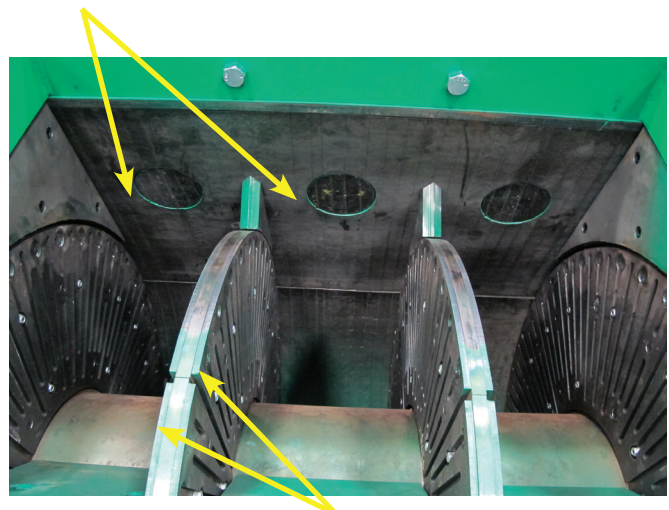
Abutment Plates



Rotor Hub

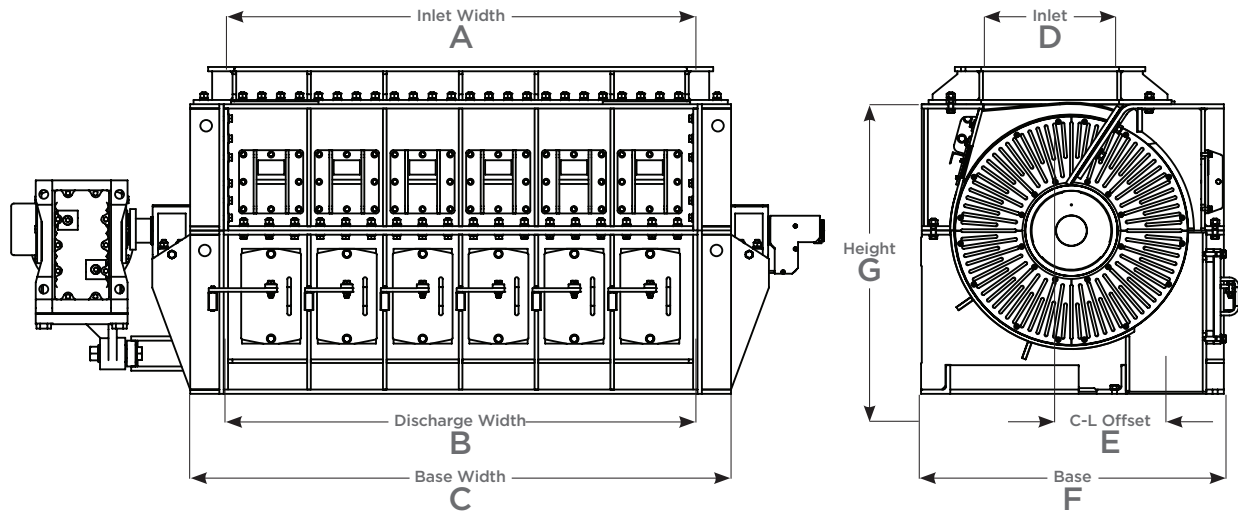
Grooved Discs

Glide Plate



Disc Liners





Dimensions and Weights

POSIFLOW™ Feeder Approximate Layout Dimensions and Shipping Weights

IN (MM)	A	B	C	D	E	F	G	LBS (KG)
1032								
X-1	10.0" (254)	12.0" (305)	22.8" (578)	20.8" (528)	16.3" (414)	43.0" (1092)	37.0" (940)	2,000 (909)
X-2	20.5" (521)	23.5" (597)	34.3" (871)	20.8" (528)	19.4" (493)	43.0" (1092)	37.0" (940)	3,100 (1,406)
X-3	31.0" (787)	34.0" (102)	42.8" (1087)	20.8" (528)	19.4" (493)	43.0" (1092)	37.0" (940)	4,000 (1,814)
X-4	42.5" (1080)	45.5" (1156)	53.0" (1346)	20.8" (528)	19.4" (493)	43.0" (1092)	37.0" (940)	5,100 (2,313)
X-5	53.0" (1346)	56.0" (1422)	63.5" (1613)	20.8" (528)	19.4" (493)	43.0" (1092)	37.0" (940)	6,200 (2,812)
X-6	64.5" (1638)	67.5" (1715)	75.0" (1905)	20.8" (528)	19.4" (493)	43.0" (1092)	37.0" (940)	7,300 (3,311)
X-7	75.0" (1905)	78.0" (1981)	85.5" (2172)	20.8" (528)	19.4" (493)	43.0" (1092)	37.0" (940)	8,430 (3,824)
X-8	85.5" (2171)	88.5" (2248)	96.0" (2438)	20.8" (528)	19.4" (493)	43.0" (1092)	37.0" (940)	9,600 (4,355)
1240								
X-2	24.8" (630)	28.9" (734)	40.8" (1036)	23.3" (592)	20.3" (516)	51.8" (1316)	48.3" (1227)	5,700 (2,586)
X-3	37.8" (960)	41.8" (1062)	53.3" (1354)	23.3" (592)	20.3" (516)	51.8" (1316)	48.3" (1227)	7,275 (3,300)
X-4	50.7" (1288)	54.6" (1387)	66.1" (1679)	23.3" (592)	20.3" (516)	51.8" (1316)	48.3" (1227)	7,730 (3,506)
X-5	63.5" (1613)	67.0" (1702)	78.5" (1994)	23.3" (592)	20.3" (516)	51.8" (1316)	48.3" (1227)	9,145 (4,148)
X-6	76.4" (1941)	82.1" (2085)	92.0" (2337)	23.3" (592)	20.3" (516)	51.8" (1316)	48.3" (1227)	11,000 (4,990)
1548								
X-3	44.0" (1118)	48.5" (1232)	57.3" (1455)	29.0" (737)	26.1" (663)	61.0" (1549)	55.0" (1397)	7,000 (3,175)
X-4	59.0" (1499)	63.5" (1613)	72.3" (1836)	29.0" (737)	26.1" (663)	61.0" (1549)	55.0" (1397)	8,350 (3,788)
X-5	74.8" (1900)	79.3" (2014)	88.0" (2235)	29.0" (737)	26.1" (663)	61.0" (1549)	55.0" (1397)	12,875 (5,840)
X-6	90.5" (2299)	95.0" (2413)	103.8" (2637)	29.0" (737)	26.1" (663)	61.0" (1549)	55.0" (1397)	16,500 (7,487)
X-7	106.3" (2700)	110.8" (2814)	119.5" (3035)	29.0" (737)	26.1" (663)	61.0" (1549)	55.0" (1397)	19,400 (8,800)
X-8	122.0" (3099)	126.5" (3437)	135.3" (3437)	29.0" (737)	26.1" (663)	61.0" (1549)	55.0" (1397)	22,700 (10,300)
1760								
X-4	69.5" (1765)	75.0" (1905)	96.5" (2451)	36.8" (935)	29.8" (757)	78.8" (2002)	76.8" (1951)	21,760 (9,870)
X-5	87.3" (2217)	92.8" (2357)	114.3" (2903)	36.8" (935)	29.8" (757)	78.8" (2002)	76.8" (1951)	24,600 (11,158)
X-6	105.0" (2667)	110.5" (2807)	132.0" (3353)	36.8" (935)	29.8" (757)	78.8" (2002)	76.8" (1951)	27,200 (12,338)
X-7	122.8" (3119)	128.3" (3259)	149.8" (3805)	36.8" (935)	29.8" (757)	78.8" (2002)	76.8" (1951)	32,600 (14,787)

Call +1 855-483-7721 or email customer.service@astecindustries.com to find the sales representative nearest you.